

# Walsall SEND Service Communications



Walsall Council

SUMMER 2 2025

## WELCOME TO THE WALSALL SEND SERVICE SUMMER TERM NEWSLETTER

These communications are designed for parents and carers of children and young people with Special Educational Needs and Disabilities (SEND). Here, we share important updates, celebrate successes, and highlight opportunities for you to engage with and shape SEND services in Walsall. We are committed to working together to improve support, services, and outcomes for children and young people with SEND. Your voice matters, and we welcome your feedback and involvement.

## ARE YOU ON OUR MAILING LIST?



Stay up to date with the latest SEND news, updates, and events in Walsall by joining our mailing list. If you are not already receiving our emails, please contact: [localoffer@walsall.gov.uk](mailto:localoffer@walsall.gov.uk)

## WALSALL CHILDREN'S SERVICES - PROUD TO BE OUTSTANDING



## WALSALL CHILDREN'S SERVICES - PROUD TO BE OUTSTANDING

We welcomed inspectors to Walsall back in May, for a week-long inspection of our children's services.

On **Tuesday 8<sup>th</sup> July** we were delighted to announce that we are officially, an 'outstanding' local authority – *the **only one for overall effectiveness in the Black Country.***

Inspectors judged us across five different areas, and the outcomes are as follows:

- The impact of leaders on social work practice with children and families – **OUTSTANDING**
- The experiences and progress of children who need help and protection - **GOOD**
- The experiences and progress of children in care - **OUTSTANDING**
- The experiences and progress of care leavers - **GOOD**
- Overall effectiveness - **OUTSTANDING**

In their report, inspectors commended children's services for its unwavering commitment to ensuring the voices of children and families in Walsall are listened to, understood and have influence over the way services are delivered.

The report explains that children in the local authority's care receive outstanding support, and that they benefit from living in stable and long-lasting homes, where children feel loved by their carers.

Underpinning all the great work, is a formidable leadership team, and exceptional workforce who all have a relentless focus on continuous improvement for children and families in Walsall.

This is well-deserved recognition for everybody in children's services, and great news for children and families in Walsall.

A copy of the full report can be found here: [InspectionReport](#)



## WORKING TOGETHER TO IMPROVE EDUCATION, HEALTH AND CARE PLAN QUALITY IN WALSALL

On **Tuesday 8th July**, we brought together partners from across education, health, social care, and our parent/carers for a SEND Quality Assurance Day, held at Walsall Art Gallery. It was a fantastic, creative space to explore this important work together. The focus of the day was to review a broad range of Education, Health and Care Plans (EHCPs) and reflect honestly on what's working well and where we need to improve. This wasn't about perfect plans, it was about real ones and using them to drive forward a shared vision of consistently high-quality, child and young person centred EHCPs across the borough.

The session was another example of our ongoing and impactful approach to co-production. Parents, carers and professionals played a key role in the discussions, contributing their insight and lived experience to help shape better outcomes for families. One parent shared:

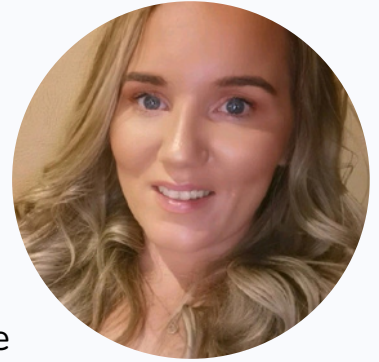
*“As a parent, I felt genuinely valued and listened to throughout the professional conversations. It's clear that partnership and co-production remain central to the work being done to improve outcomes for children with SEND in Walsall. The commitment to continuous improvement and best practice was evident throughout the event.”*

Thank you to everyone who took part. This is part of our continued commitment to improving the quality and consistency of EHCPs in Walsall, making sure every plan tells the real story of a child or young person and supports them to achieve their best possible outcomes.



## **WELCOME TO OUR NEW EHC TEAM MANAGER**

We're pleased to introduce Rebecca Shaw as the new Team Manager for the Education, Health and Care (EHC) team in Walsall. Rebecca brings a broad range of experience to the role. Her background spans healthcare and education, including time spent in a psychology team supporting children with autism, severe learning difficulties, and adults with profound and multiple learning disabilities.



She also worked for five years as a SENDCo in an independent specialist setting, supporting children with Social, Emotional and Mental Health (SEMH) needs through highly individualised approaches. Since joining Walsall as Senior for New Assessments, Rebecca has demonstrated a clear commitment to improving outcomes for children and young people with SEND.

Now, as Team Manager, she is looking forward to continuing this work and further developing relationships with families across the borough. Rebecca is passionate about effective communication, building trust with parents and carers, and making sure every child receives support that truly makes a difference. She is proud to lead a team that shares her drive to put children and young people at the centre of everything we do.

## **LOCAL OFFER UPDATES!**

We've been working hard behind the scenes to make the SEND Local Offer more accessible, easier to navigate, and more informative for families.

Thanks to your feedback, we've made some key improvements, including new navigation tabs for children and young people, parents/carers, and professionals.

We also know that some of the language used around SEND, especially acronyms and abbreviations, can be unclear.

To help, we've added a Glossary of Terms focused on commonly used initialisms. This is part of our ongoing work to improve the Local Offer in response to your feedback.

Visit the Local Offer website: <https://send.walsall.gov.uk>

# PARENT/CARER SUPPORT

## SUPPORT FOR FAMILIES OVER THE SUMMER HOLIDAYS

With the summer holidays approaching, we understand that balancing work, family life, and childcare can be challenging, especially when routines change. Below are some helpful websites offering practical advice, emotional support, and useful resources for parents and carers of children with SEND.

### Mind

Offers advice on managing stress, avoiding burnout, and maintaining well being during the school holidays, including tips for parents working from home. For more info use this link: [Mind](#)

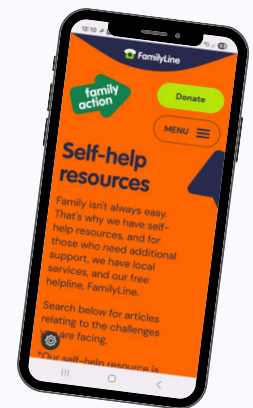


### Family Action

Provides a range of self-help resources to support children and young people with SEND through periods of change and reduced routine.

These include:

- Sun Safety for children with Autism - link: [SunSafety](#).
- Water Safety for children with Autism - link: [WaterSafety](#).
- Social Stories for days out - link: [SocialStory](#).
- Going on Holiday with a neurodivergent child - link: [Holiday](#).



### The Good Schools Guide

Offers articles, advice and tips on what to do during the summer holidays with children and young people with SEND. Use this link for more info: [GoodSchools](#)



## PARENT/CARER SUPPORT

### SENSORY BAGS



McDonald's restaurants across Walsall and the Black Country are offering sensory bags to customers, with items such as fidget toys and ear defenders.

These have been supplied by Sassy Sensory Surprises, a local provider involved in HAF (Holiday Activities and Food Programme) and Short Breaks.



### KIDS EAT FOR £1

Various restaurants and cafes are joining the 'Kids can eat for £1' again this summer. Here is a list of places that are involved and their offer:

- **Morrisons Cafe** - Kids eat free at Morrisons cafes with the purchase of an adult meal (£4.50 or more).
- **Dunelm Cafe** - Kids eat free when an adult spends at least £4.
- **Asda Cafe** - Kids' meals available for just £1 . No minimum spend.
- **Sizzling Pubs** - Kids' main meals for £1 Monday–Friday (12pm – 7pm).
- **Brewers Fayre Pubs, Table Table & WhitBread Inns** - Unlimited breakfast: Up to two kids eat free with every adult breakfast (£10.99).
- **Beefeater Pubs** - Kids eat free unlimited breakfast, two kids per paying adult.
- **Hungry Horse Pubs** - Kids' meals for £1 every Monday, two children can dine per full-paying adult.
- **Pizza Hut** - Free kids' buffet (unlimited pizza, pasta, and salad) daily until 3pm during summer. Requires a £10 adult spend.
- **TGI Fridays** - Kids eat free all day everyday with the purchase of an adult main at TGI Fridays. Sign up to loyalty programme.
- **Yo! Sushi** - Kids eat free during school holidays. Requires a £10 minimum adult spend.



# PARENT/CARER SUPPORT

## SUMMER ADVENTURE PASSPORT - 0-5 YEARS!

Is your child starting school this September?



Get ready for a summer full of fun, learning, and adventure with the Summer Learning Passport! Keep your child curious, confident and ready for September!

This special booklet is packed with exciting activities and challenges designed to spark curiosity and build confidence in little learners. From developing independence to making friends, exploring stories, and getting school-ready — there's something for every child!



For more information about this use this link: [SummerPassport](#)

You can collect your summer passport from the **Family Hubs** or **local library** from **Friday 11<sup>th</sup> July**.



Free tea and coffee morning for SEND Parents run by SEND Parents to get together for support and chat!

**When:** Saturday 9<sup>th</sup> August

**Time:** 10am - 12pm

**Where:** Manor Farm Community Centre, WS4 1EU

### Neurodiverse Parent Group

Discover Your Unique Community

Supportive Community | Discussions and Awareness | Workshops and Guest speakers

A group for neurodiverse/SEND parents, parents of neurodiverse/SEND children, or pre-diagnosis.  
All Welcome.

Free Weekly Support Sessions  
Walsall and Darlaston

Email: [love@meltaminds.co.uk](mailto:love@meltaminds.co.uk)  
[www.meltaminds.co.uk/blogs](http://www.meltaminds.co.uk/blogs)

From Monday 23rd September 2024



## SEND PARENT PARTNERSHIP GROUP

Are you a parent or carer of a child or young person with **Special Educational Needs and/or Disabilities (SEND)**? We want to hear from you!

Join our **SEND Parent Partnership Group** to share your experiences, provide valuable feedback, and help shape SEND services in Walsall

### Why Join?

- **Have your say** - Share your thoughts, ideas, and experiences.
- **Make a difference** - Contribute to improving SEND support and services in Walsall.
- **Connect with others** - Meet with other parents and carers like you!

**Together, we can create positive change!**

If you're interested in joining, we'd love to hear from you. Please get in touch with Sam:

[samantha.house@walsall.gov.uk](mailto:samantha.house@walsall.gov.uk)



## HEALTH SUPPORT

### SUPPORTED WAITING NETWORK DATES

The supported waiting partnership network meetings will be running every month where there will be guest speakers to advise on a variety of monthly topics and many services who support with access to additional support for you and your child.

Each monthly meeting will be held on the **Last Wednesday of the month** at **Manor Farm Community Association, Rushall, WS4 1EU**

For more information or further advice please call: **01922 656463** or email [pals.officer@nhs.net](mailto:pals.officer@nhs.net)



The flyer features the Walsall Family Hubs logo (Supporting families to live happier lives) and the NHS Walsall Healthcare NHS Trust logo. The title is 'Supported Waiting Parent Network'. Below the title, it asks 'Is your child on a waiting list to be seen by a paediatric health service? Come and join us for support while you wait to be seen.' It lists forthcoming dates for 2025: June 25th, July 30th, August 27th, September 24th, October 29th, and November 26th. Contact information includes telephone 01922 656463 or email pals.officer@nhs.net. The meeting time is 9.30am-11.30am at Manor Farm Community Association, King George Crescent, Rushall, Walsall, WS4 1EU. An illustration shows a family with a child and a dog.

### PARENT FEEDBACK!

*"I felt like I was being treated as a human and really felt you all understood"*

*"They see us parents as humans to with feelings and go out their way to help with anything they can, I would like to say a massive thank-you"*

*"I felt very welcomed and supported in a new environment"*

### SCHOOL NURSE SUMMER DROP INS

#### EVERY WEDNESDAY

**Dates:** 23<sup>rd</sup> July - 27<sup>th</sup> August

**Time:** 10am- 12pm

**Where:** Harden Heath Centre, First Floor, Walsall WS3 1ET

If you need to get in touch with the School Nurses contact the the Single Point of Access on:

**01922 423 349**



The flyer features the Walsall Family Hubs logo (Supporting families to live happier lives) and the NHS Walsall Healthcare NHS Trust logo. The title is 'School Nurses are here for you during the Summer Holidays!'. Below the title, it says 'Drop in to one of our weekly sessions for advice and support for your child or young person around'. A list of topics includes: Emotional Health and wellbeing, Keeping safe and support with bullying, Healthy lifestyles, Healthy weight, Healthy relationships, Bedwetting, Continence, Sleep, Behaviours, Neurodiversity, Smoking, alcohol and drug advice, Body changes/puberty, and Immunisations. An illustration shows a female school nurse in blue scrubs holding a clipboard.



## HEALTH SUPPORT



**Think pharmacy first for children this summer**

Your pharmacist can provide advice and treatment if your child is suffering from a sore throat, earache, sinusitis, impetigo and infected insect bites. Just think pharmacy first.

- Sore throat (5 and over)
- Sinusitis (12 and over)
- Earache (17 and under)
- Impetigo (1 and over)
- Infected insect bite (1 and over)

Private consultation rooms available

## MENTAL HEALTH SUPPORT

**YOUNGMINDS** has a great bank of resources to support children and young people with SEND with their mental health.

For more info check out this link: [YOUNGMINDS](#)

**YOUNGMINDS**



**Kooth** are offering FREE webinars and advice for young people aged 11+ throughout the holidays. For more information on how to access this and sign up to free mental wellbeing support use this link: [Kooth](#)

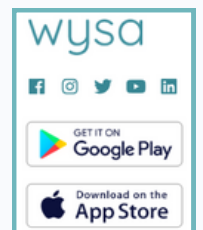


### FREE Mental Health Support for Secondary School Pupils in the Black Country

Walsall If you are asked for a code, please enter **BCWA2023**

Wysa is an AI wellbeing coach that has been commissioned by Black Country Health NHS Foundation Trust to give you a safe, non-judgmental space where you can talk about anything and everything that's bothering you. Let off steam and share your worries - Wysa is here to listen.

For more info use this link: [WYSA](#)



## CHILDREN/YOUNG PERSON OPPORTUNITIES

### KIC RADIO - AMPLIFYING YOUTH VOICES



Have you just finished your exams and wondering what's next? Looking for something exciting, meaningful, and creative to do this summer?

KIC Radio, a national youth radio station, is inviting young people aged **14 - 21** to experience the world of digital media— **FOR FREE!**

Get hands-on with Radio, Podcasting, Video Production, Scriptwriting, Interviewing, Editing, and so much more.

Email [studio@kicradio.co.uk](mailto:studio@kicradio.co.uk) or call 03300 432 313.



Sassy Sensory Surprises have a variety of activities running this summer - sign up to their mailing list for more info- email: [toni@sassysensorysurprises.co.uk](mailto:toni@sassysensorysurprises.co.uk)



Little Hooligans soft play centre are offering a summer "Play Pass". Enjoy unlimited visits to the soft play throughout the summer holidays. For just £12 per child - Valid from 1<sup>st</sup> July - 1<sup>st</sup> September. For more info visit: [LittleHooligans](http://LittleHooligans)

Legoland Discovery Centre in Birmingham are offering - 50% off ticket admissions if you live in one of the following post codes: B, WV, WS, DY, ST or TF.

For more info visit here: [LegoLandDC](http://LegoLandDC)



## EVENTS

SEN and Disability  
Information, Advice  
and Support

Walsall  
sendias

### WALSALL SENDIASS SEND FAIR

Please come along to our SEND Fair to meet a range of professionals and ask any questions or obtain any information and advice

**Date:** Tuesday 23rd September

**Time:** 10am – 12pm

**Location:** Conference Room, Manor Farm  
Community Centre, Rushall, WS41EU



Book your free place here: [SENDIASSFair](#)



FACE WALSALL  
PARENT CARER FORUM

### SAVE THE DATE SEND INFORMATION FAIR

FRIDAY 7<sup>TH</sup> NOVEMBER - 10AM - 12PM  
BLOXWICH ACTIVE LIVING



FACE WALSALL  
PARENT CARER FORUM

# SHAPE

## YOUTH SUMMER FEST

SATURDAY 12 JULY 2025  
12NOON - 6PM  
SANDWELL VALLEY, WEST BROMWICH, B71 4BG

**FREE Entry!**

**YOUTH ZONE**  
Featuring music workshops & live music and DJ sets, Youth Bus, climbing wall, FI Simulator and mini stage with open mic performances

**FAMILY ZONE**  
Featuring planting, soft archery, carnival play booth, dart throwing contest, mud painting and Bangers n' Mashup C.I.C\*

**MUSIC ZONE**  
Featuring DJ Shuggz, NuVibe Entertainment, Unity Dance Academy, Bhangra Smash Up & SHAPE Your Talent winners

**SPORTS ZONE**  
Featuring human zorb bowling, boxing, cycling, cricket, NFL flag football, mini gym and Olympic weightlifting

**CULTURAL ZONE**  
Featuring Breakin' dance workshops, graffiti workshop, mobile library, Chance Heritage Trust & Oak House Museum activities

**FOOTBALL TOURNAMENT**  
A borough-wide youth football tournament (pre-registration is required)

**CAREERS EXPO\***  
For young people aged 14-19 years (up to 25 years for those with SEND)

For more information, visit  
[WWW.JUSTYOUTH.ORG.UK](http://WWW.JUSTYOUTH.ORG.UK)

Please note: Some activities and performances may be subject to change  
\*Activity times may vary, visit the website for more information



WALSALL



NHS  
Black Country Healthcare  
NHS Foundation Trust

### Join us for an exciting WELL-BEING WORKSHOP

Discover the ways to look after our  
physical and mental health through  
nature, crafts and games!



Monday 11<sup>th</sup> August  
1:00pm - 2:30pm

Caldmore Community Gardens, Carless  
Street, WS1 3RH



Monday 18<sup>th</sup> August  
1:00pm - 3:00pm

Caldmore Community Gardens, Carless  
Street, WS1 3RH



For additional information or brief sign up form to register  
your attendance for these events, please email  
[bchft.reflexions@nhs.net](mailto:bchft.reflexions@nhs.net)

## SEND SERVICES FEEDBACK

Please could you spare a few minutes to complete this feedback form on your experience with the SEND Services. Please use the QR code or link below. Your feedback is greatly appreciated.

[SENDSERVICEFEEDBACK](#)



Thanks



## FEEDBACK

If you have any feedback or wish something to be included in the next SEND Communications please do not hesitate to get in touch.

**Next Issue:** SEND Services Communications Autumn 1

**Submit your updates by 28<sup>th</sup> August to be included!**

Please use the below emails

Sam: [samantha.house@walsall.gov.uk](mailto:samantha.house@walsall.gov.uk)

Local Offer: [localoffer@walsall.ov.uk](mailto:localoffer@walsall.ov.uk)



**Thank you for being part of the Walsall SEND community!**



Walsall Council

